

ARMORMAX® 70 SR can withstand repeated **thermal cycling**, **mechanical impact** and **abrasion** due to its high reinforcing needle content. The metal fibers are uniformly distributed in the refractory structure. This technology offers the following advantages:

- Maintains 100% of original strengths when thermally cycled
- High resistance to abrasion and mechanical impact
- High refractoriness for a metal fiber-containing product
- Metal fiber type carefully chosen to provide high fractural toughness and high flexural strength
- Excellent for applications up to 2300°F (1200°C).



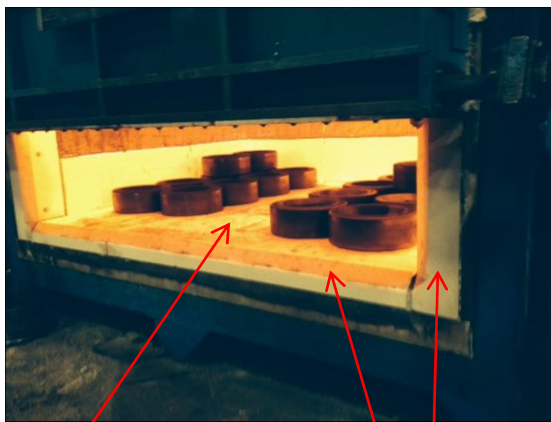
Rotary hearth furnace charge door lintel in service 2 years

### Successful Applications

- Box-type forge furnace jambs and sills
- Rotary hearth furnace lintels
- Car bottom furnace deck perimeters
- Slot forge furnace aprons
- Pier blocks
- Hearth blocks



2450°F Forge furnace sill after 15 months in service



ARMORMAX® 70SR hearth plates in forge furnace (front 18" behind sill)

ARMORMAX® 70SR sill, jamb shapes



Heat treat furnace car deck perimeter after 5 months in service



Global **Refractory** Solutions