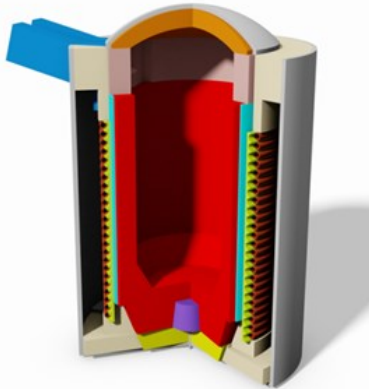


STEEL CORELESS WORKING LININGS & MAINTENANCE REFRACTORIES



Magnesia Based Dry Vibratables

Completely dry, high-purity magnesia based refractory with the highest temperature capability of all induction furnace refractories.

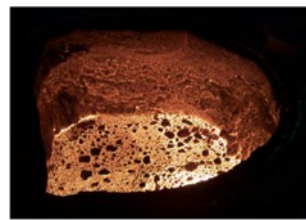
Products	Comments
MINRO-MAG RAM M20	Recommended for high temperature air melt and vacuum furnaces of less than 1 ton capacity. Can also be used as crucible back-up
MINRO-MAG RAM M22LD	Low Dust formulation for high temperature air melt and vacuum furnaces of less than 1 ton capacity. Can also be used as crucible back-up
DRI-VIBE® 529M and 673M	Recommended for vacuum furnaces



DRI-VIBE® Steel Coreless Linings

Completely dry, alumina based with spinel bond for high temperature thermal stability and strength. Suitable for melting a wide range of carbon, stainless and high-alloy steels.

Products	Maximum Temperature
DRI-VIBE® 682A	1650°C (3000°F)
DRI-VIBE® 388A	1620°C (2950°F)
DRI-VIBE® 883A	1700°C (3100°F)
DRI-VIBE® 931A	1620°C (2950°F)
DRI-VIBE® 937Cr	1815°C (3300°F)
DRI-VIBE® 975A	1710°C (3100°F)



Steel Coreless Top Cap & Spout Materials

Alumina based, dry-vibratables for top caps
DRI-VIBE® 88A
DRI-VIBE® 480Cr
DRI-VIBE® 652A
Alumina based, wet ram and plastics for top caps
RAM MAX® 90 P FINE
RAM MAX® 90 P SEAL
MINRO-AL® RAM A53W
STEEL-PAK 90Cr

