

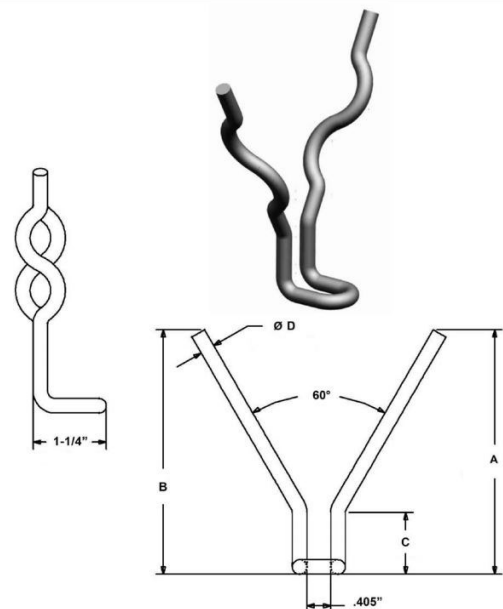
Refractory anchors specialize in high temperature alloy and stainless fasteners used to anchor refractories in furnaces and process equipment. The refractory anchor hardware is wire formed, die stamped, roll threaded and welded into a variety of anchoring products for castable monolithic, abrasion resistant and ceramic fiber refractory linings.

V-ANCHORS 304SS

Item Code	Size Description
5300000861	1" LONG 304SS V-ANCHOR 5/16" DIA
5300002468	1.5" 304SS V-ANCHOR 5/16" DIA
5300000868	2" LONG 304SS V-ANCHOR 5/16" DIA
5300000869	2.5" LONG 304SS V-ANCHOR 5/16" DIA
5300000870	3" LONG 304SS V-ANCHOR 5/16" DIA
5300000871	3.5" LONG 304SS V-ANCHOR 5/16" DIA
5300000872	4" LONG 304SS V-ANCHOR 5/16" DIA
5300000873	4.5" LONG 304SS V-ANCHOR 5/16" DIA
5300000874	5" LONG 304SS V-ANCHOR 5/16" DIA
5300000876	6" LONG 304SS V-ANCHOR 5/16" DIA
5300000877	7" LONG 304SS V-ANCHOR 5/16" DIA
5300000878	8" LONG 304SS V-ANCHOR 5/16" DIA
5300002717	8" LONG 304SS V-ANCHOR 3/8" DIA
5300000880	9" LONG 304SS V-ANCHOR 3/8" DIA
5300001706	14" LONG 304SS V-ANCHOR 3/8" DIA
5300002135	6" LONG 304SS V-ANCHOR 3/8" DIA
5300000862	10" LONG 304SS V-ANCHOR 3/8" DIA
5300002585	11 INCH 304SS V-ANCHOR 5/16" DIA
5300000865	12" LONG 304SS V-ANCHOR 3/8" DIA
5300000866	12.5" LONG 304SS V-ANCHOR 3/8" DIA
5300002558	14 INCH 310SS V-ANCHOR 3/8" DIA

V-ANCHORS 310SS

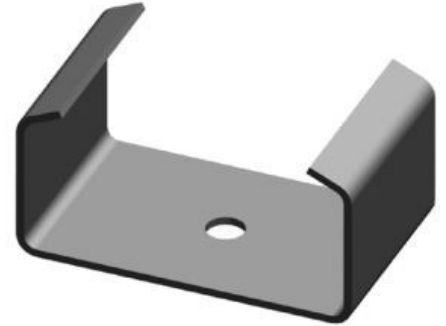
Item Code	Size Description
5300002759	2" LONG 310SS V-ANCHOR 5/16" DIA
5300002564	3" LONG 310SS V-ANCHOR 5/16" DIA
5300002825	3.5" LONG 310SS V-ANCHOR 5/16" DIA
5300000776	4" LONG 310SS V-ANCHOR 5/16" DIA
5300002826	4.5" LONG 310SS V-ANCHOR 5/16" DIA
5300000779	5" LONG 310SS V-ANCHOR 5/16" DIA
5300000780	6" LONG 310SS V-ANCHOR 5/16" DIA
5300002389	6" LONG 310SS V-ANCHOR 1/4" DIA
5300002390	7" LONG 310SS V-ANCHOR 5/16" DIA
5300002827	7.5" LONG 310SS V-ANCHOR 5/16" DIA
5300000782	8" LONG 310SS V-ANCHOR 5/16" DIA
5300002557	9" LONG 310SS V-ANCHOR 3/8" DIA
5300002707	10" LONG 310SS V-ANCHOR 3/8" DIA
5300002596	11" LONG 310SS V-ANCHOR 3/8" DIA
5300002597	12" LONG 310SS V-ANCHOR 3/8" DIA
5300000771	12.5" LONG 310SS V-ANCHOR 3/8" DIA



Global **Refractory** Solutions

304SS C-CLIPS

Item Code	Size Description
5300000101	BRICK ANCHOR C-CLIP 304SS
5300002699	Anchor Brick VCX C-Clip 304SS 0.5" DROP
5300002700	Anchor Brick VCX C-Clip 304SS 1.0" DROP
5300002701	Anchor Brick VCX C-Clip 304SS 1.5" DROP
5300002702	Anchor Brick VCX C-Clip 304SS 2.0" DROP



310SS C-CLIPS

Item Code	Size Description
5300002703	Anchor Brick VCX C-Clip 310SS 1.5" DROP
5300002704	Anchor Brick VCX C-Clip 310SS 2.0" DROP

