



REFRACTORIES

— FOR —

WASTE INCINERATION

Municipal - Industrial - Hazardous



Global **Refractory** Solutions



Allied Mineral Products is a world leader in the design and manufacture of monolithic refractories and precast shapes. With strong sales and service teams in the foundry, aluminum, steel, heat treat/forge and industrial markets, our success is based on our dedication to *Being There Worldwide with Refractory Solutions*.

Producing quality, consistent products is top priority at Allied and we have the products to meet your refractory needs. Our extensive product line includes innovative refractory technology and longstanding refractory alternatives.

Allied's focus on quality at every stage in the production process is unparalleled. A stringent raw material standard and global quality control testing before and after each batch is produced, provides customers with consistent products. We provide quick response times to any urgent request through flexible manufacturing systems at all our manufacturing facilities.

Global **Refractory** Solutions



12 MANUFACTURING FACILITIES
OVER **145** INTERNATIONAL SALES REPRESENTATIVES
3 RESEARCH AND TECHNOLOGY FACILITIES
SALES ACTIVITY IN MORE THAN **130** COUNTRIES
7 PRECAST SHAPES FACILITIES





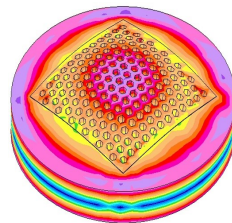
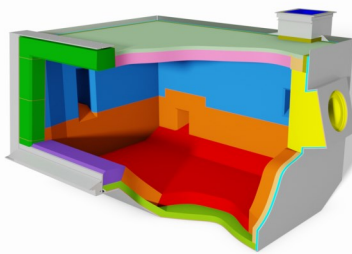
RESEARCH & ENGINEERING

After gaining a detailed understanding of your specific needs, our team evaluates operating criteria and physical design parameters to create a detailed engineered design encompassing:

- Patented technologies
- Optimized product zoning
- Thermal models to optimize and validate designs
- Proven safety lining system designs
- Unique installation properties and techniques
- Leading edge refractory system designs

We're focused on developing new products, improving existing products and perfecting installation techniques. Our product development and testing is conducted in our state of the art research and technology center. We have an on-site gunning and shotcreting lab allowing extensive testing of installation properties.

As an innovative, technology-driven supplier we're devoted to providing customized refractory solutions for various industry operations. We offer a wide variety of high performance refractory products with superior raw material quality.



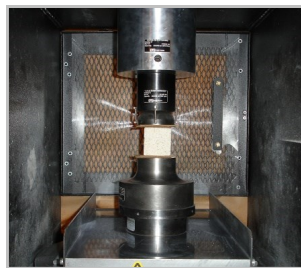
FEA Thermal Analysis



Flow Testing



Contact Tests



Strength Tests





HAZARDOUS WASTE INCINERATION

Rotary Kiln Incineration System



KILN HEAD

TUFFCRETE® ARZ

TUFFCRETE® 65 M

TUFFCRETE® 608

INSULMIX® 2460 LI

ROTARY KILN

TUFFCRETE® 60 M ARZ

TUFFCRETE® 65 M

TUFFCRETE® AZS 5R

TUFF-FLO 90-10 ULC

DURACON 35 LS

INSULMIX® 2460 LI

SECONDARY COMBUSTION CHAMBER - FLUE

TUFF-FLO 50

TUFFCRETE® 60 M

REZIST ABRABE 608G

INSULMIX® 2035 LI

KILN HEAD HOOD

TUFFCRETE® 60 M

TUFFCRETE® 608

TRANSITION AREA

TUFFCRETE® 65 M

TUFFCRETE® 47

TUFFCRETE® 608

INSULMIX® 2035 LI

SLAG DISCHARGING AREA

TUFFCRETE® 608

INSULMIX® 2035 LI

SECONDARY COMBUSTION CHAMBER

TUFFCRETE® 608

TUFF-FLO 50

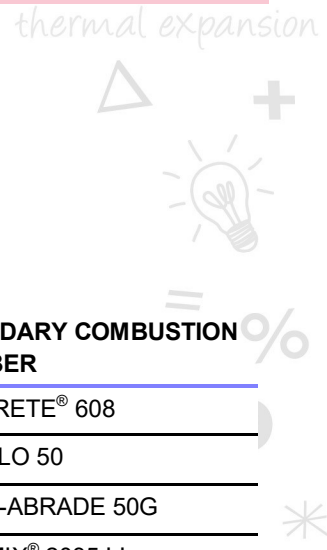
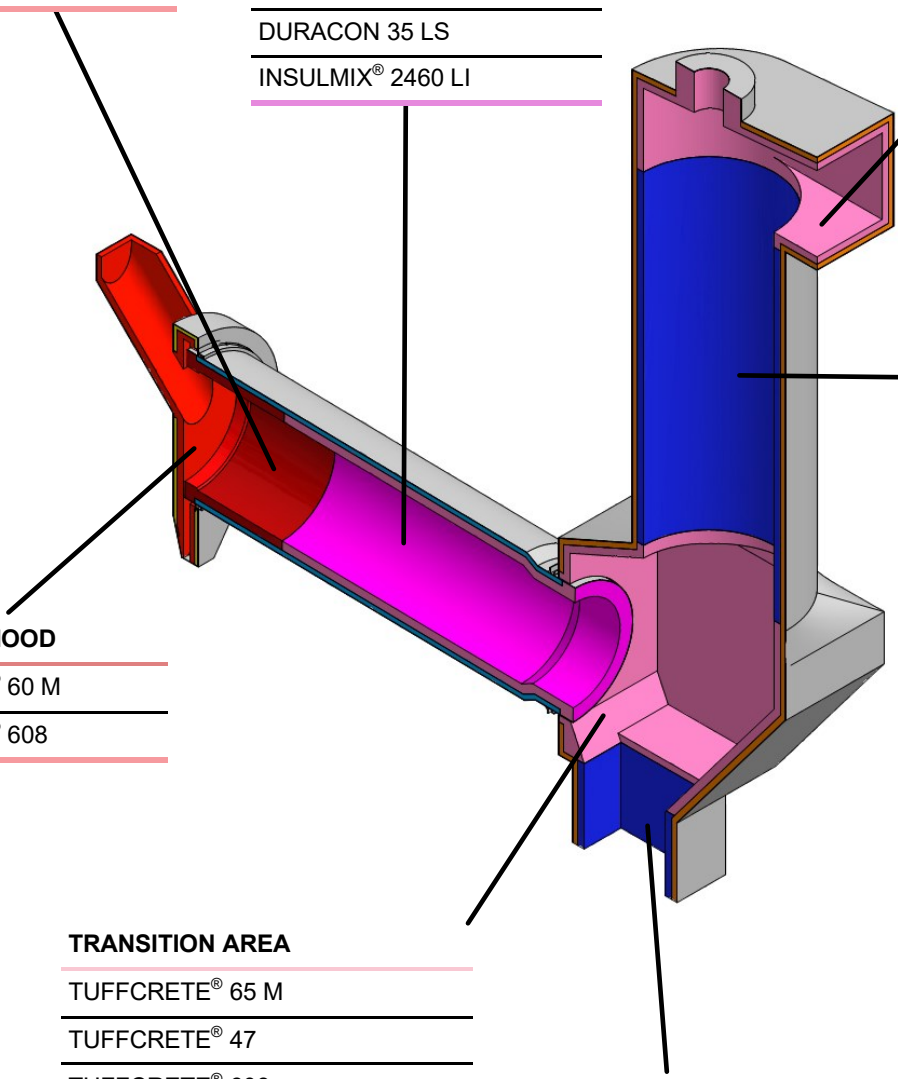
REZIST-ABRADE 50G

INSULMIX® 2035 LI

BURNER

DURACON® 34

TUFF-FLO 60A





HAZARDOUS WASTE INCINERATION

Liquid Waste Incinerator

UPPER AREA

TUFFCRETE® 60MARZ

FAST-TURN® 65M

TUFFCRETE® 608

NANOTEK® BZSC

TUFF-FLO 32 ARZ

INSULMIX® 2460 LI

INSULMIX® 2035 LI

LOWER AREA

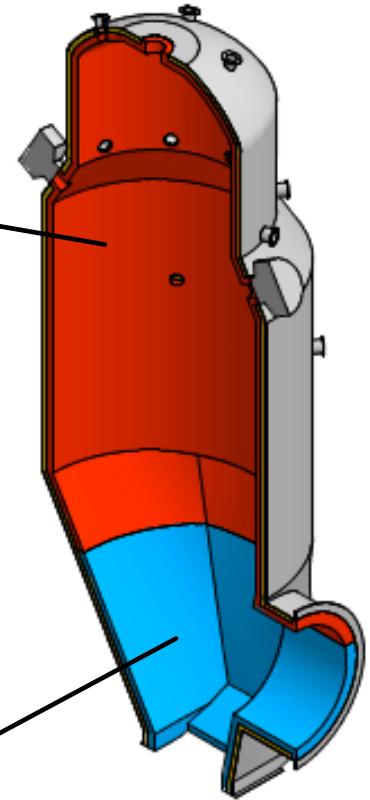
TUFFCRETE® 608

TUFFCRETE® 20SIC

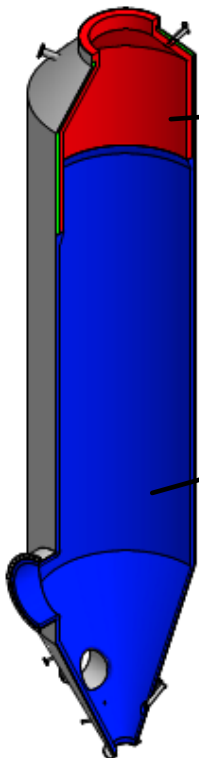
TUFFCRETE® ARZ

INSULMIX® 2460 LI

INSULMIX® 2035 LI



Cooling Tower



UPPER AREA

TUFFCRETE® FS

STACKLINE B PC

NANOTEK® FS ULTRA

INSULMIX® 2035 LI

MIDDLE/LOWER AREA

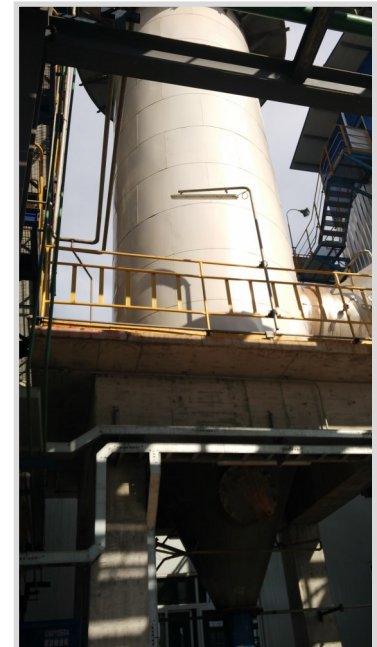
We recommend precoating the furnace shell with anti-corrosion paint.

STACKLINE B PC

NANOTEK® FS ULTRA

TUFFCRETE® 47

GUNCAST® 26 LI





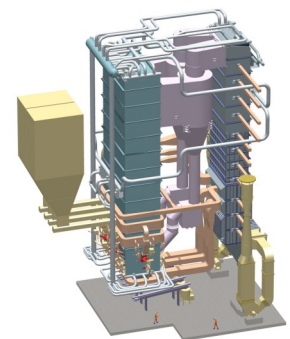
POWER GENERATION

process
refractory
global
10x

Innovative, solution driven products designed to meet the unique needs of power plants. We offer refractory solutions for cyclones, burner covers, ash hoppers and cricket walls. At Allied, power means energy. This industry encompasses many diverse fields with unique equipment and needs and we aim to support and optimize them.

Our product families for power include REZIST ABRABE, FAST-TURN®, TUFFCRETE® and precast refractory shapes.

Location	Product Name	Description	Installation Method
Fluidized Bed	TUFFCRETE® 65 M	Alumina based, low cement castable	Vibration, pumping, shotcrete, self-flow
	TUFF-FLO 32 SA	Alumina based, low cement, self-flowing castable	Vibration, pumping, shotcrete, self-flow
	REZIST ABRABE 50G	Low cement	Pneumatic gunning
Cyclone Separator	TUFFCRETE® 60 SiC	High SiC, abrasion resistant	Vibration, shotcrete
	TUFFCRETE® 70 ABR	Alumina based, abrasion resistant castable	Vibration, shotcrete
	REZIST ABRABE 80 SiC	High SiC, low cement	Pneumatic gunning
Return Feeder	TUFFCRETE® 60 M	Alumina based, low cement castable	Vibration, pumping, shotcrete, self-flow
	TUFFCRETE® 608	Mullite based, low cement castable	Vibration, pumping, shotcrete
	REZIST ABRABE 50G	Low cement	Pneumatic gunning
High-temperature Flue	TUFFCRETE® 70 ABR	Alumina based, abrasion resistant castable	Vibration, pumping, shotcrete
	TUFFCRETE® 65 M	Alumina based, low cement castable	Vibration, pumping, shotcrete, self flow
	MINIRO-AL PLASTIC A89	Alumina based, phosphate-bonded	Ramming
Partition	METAL-ROK® 70 M	Metal ceramic composite materials	Metal fiber reinforced precast shape
	TUFFCRETE® 60 M	Alumina based, low cement, high purity castable	Vibration, pumping, shotcrete, self-flow





Product Name	Al ₂ O ₃ %	SiO ₂ %	Cr ₂ O ₃ %	SiC %	ZrO ₂ %	Density g/cm ³ (lb/ft ³)	Maximum Temperature
CASTMAX [®] 28 S HR	40.7	45.6	-	7.3	-	2.28 (142)	1535°C (2800°F)
DURACON [®] 34	98.6	0.1	-	-	-	3.12 (195)	1870°C (3400°F)
DURACON [®] 3450CR	89.2	-	9.2	-	-	3.29 (205)	1870°C (3400°F)
FAST-TURN [®] 65 M	64.8	30.5	-	-	-	2.58 (161)	1700°C (3090°F)
GUNCAST [®] 26 LI	45.9	41.1	-	-	-	2.07 (129)	1425°C (2600°F)
INSULMIX [®] 2035 LI	36.7	42.5	-	-	-	0.60 (37)	1100°C (2010°F)
INSULMIX [®] 2460 LI	44.8	34.9	-	-	-	1.0 (62)	1315°C (2400°F)
METAL-ROK [®] 70 M*	70.2	25.4	-	-	-	3.06 (191)	1350°C (1500°F)
MINRO-AL [®] PLASTIC A89	85.3	9.1	-	-	-	2.93 (183)	1700°C (3090°F)
NANO-TEK [®] BZSC	62.5	15.4	-	7.9	10.6	2.87 (179)	1538°C (2800°F)
NANO-TEK [®] 91 HS	91.3	6.0	-	-	-	2.88 (180)	1705°C (3100°F)
RAM MAX [®] 80 SIC P	11.5	5.3	-	77.6	-	2.68 (167)	1500°C (2732°F)
REZIST ABRABE 50G	69.7	23.4	-	-	-	2.39 (149)	1650°C (3000°F)
REZIST ABRABE 608G	58.9	27.0	-	7.9	-	2.38 (149)	1650°C (3000°F)
REZIST ABRABE 80 SIC G	8.6	5.3	-	81.1	-	2.55 (159)	1500°C (2730°F)
TUFFCRETE [®] ARZ	41.3	46.7	-	4.1	1.5	2.32 (145)	1650°C (3000°F)
TUFFCRETE [®] FS	10.5	86.8	-	-	-	2.00 (125)	1315°C (2399°F)
TUFFCRETE [®] 20 SIC	41.8	31.7	-	21.4	-	2.32 (145)	1650°C (3000°F)
TUFFCRETE [®] 47	47.1	46.5	-	-	-	2.16 (135)	1540°C (2800°F)
TUFFCRETE [®] 608	59.3	28.3	-	7.9	-	2.60 (162)	1650°C (3000°F)
TUFFCRETE [®] 60 M	64.6	30.2	-	-	-	2.53 (158)	1700°C (3090°F)
TUFFCRETE [®] 65 M	65.8	28.1	-	-	-	2.58 (161)	1700°C (3090°F)
TUFFCRETE [®] 60 M ARZ	54.0	38.5	-	4.2	1.5	2.48 (155)	1700°C (3090°F)
TUFF-FLO 32 ARZ	75.4	10.9	-	4.2	3.4	3.00 (187)	1760°C (3200°F)
TUFF-FLO 50	49.7	44.7	-	-	-	2.32 (145)	1700°C (3090°F)
ULTRAFLO 70 SIC	15.3	4.8	-	69.2	-	2.48 (154)	1650°C (3000°F)

*Stainless Steel Fibers are not included in the chemical analysis.

Headquarters:

Allied Mineral Products, LLC

Columbus, Ohio, U.S.A.

614-876-0244 - info@alliedmin.com

USA Manufacturing Locations:

Allied Mineral Products, LLC

Columbus, Ohio, USA

614-876-0244 - info@alliedmin.com

Allied Mineral Products

Pell City, Alabama, USA

614-876-0244 - info@alliedmin.com

Allied Mineral Products

Brownsville, Texas, USA

956-831-2022 - info@alliedmin.com

International Manufacturing Locations:

Allied Mineral Products Europe B.V.

Tholen, Netherlands

31-166 601200 - customer.service@alliedmin.com

Allied Mineral Products (Tianjin 1 & 2) Co., Ltd.

Tianjin, China

86-22-252-10378 - chinasales@alliedmin.com

Allied Mineral Products (Foshan) Co., Ltd.

Foshan City, China

86-22-252-10378 - chinasales@alliedmin.com

Allied Mineral Products South Africa (Pty) Ltd.

Johannesburg, South Africa

27-11-902-2900 - southafricasales@alliedmin.com

Allied Refractory Products India Private Ltd.

Ahmedabad, Gujarat, India

91-2717-616800 - india@alliedmin.com

Allied Mineral Products Russia

Elabuga, Tatarstan, Russia

79-16-585-2753 - info@alliedmin.com

Toll Manufacturers:

Refractarios lunge Limitada

Santiago, Chile

56-22-745-3613 - info@alliedmin.com

Allied Mineral Products Brazil

Pocos de Caldas, Brazil

614-876-0244 - info@alliedmin.com

Licensees:

Nippon Crucible Co., Ltd.

Tokyo, Japan

614-876-0244 - japan@alliedmin.com

Shinagawa Refractories Australasia

Unanderra NSW Australia

+61-2-4222-3834 - info@alliedmin.com

Visit alliedmineral.com for more information.